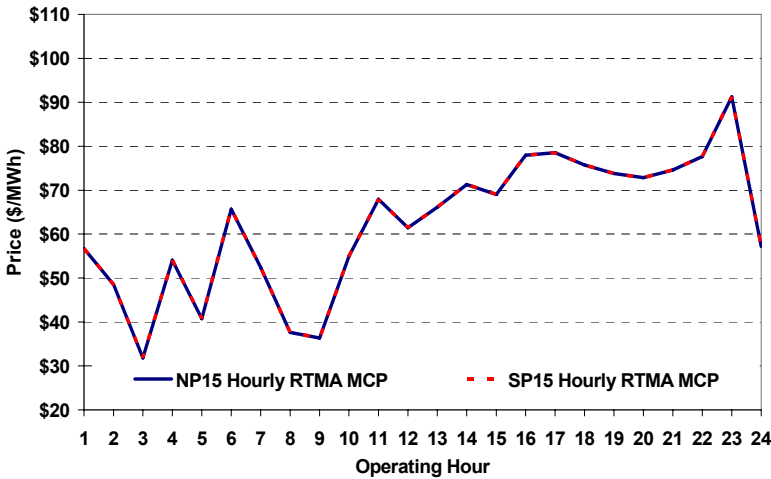
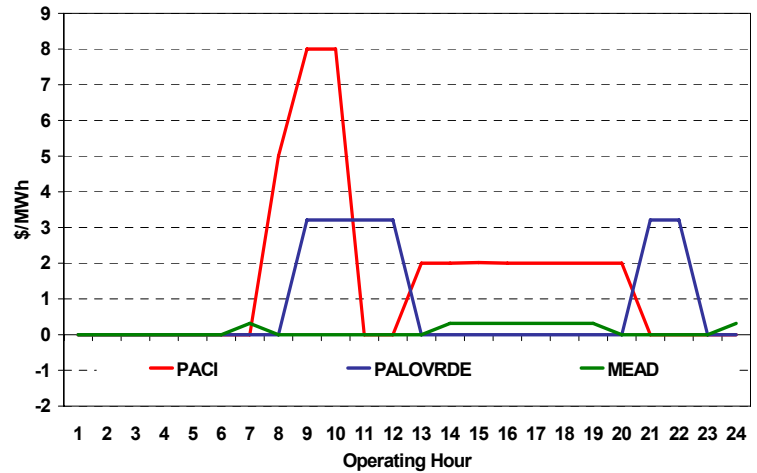


The content of this page is subject to change without notice. Decisions based on information contained herein are the visitor's responsibility.

### Real-Time Hourly Average MCP



### Selected Day Ahead Branch Group Congestion Prices

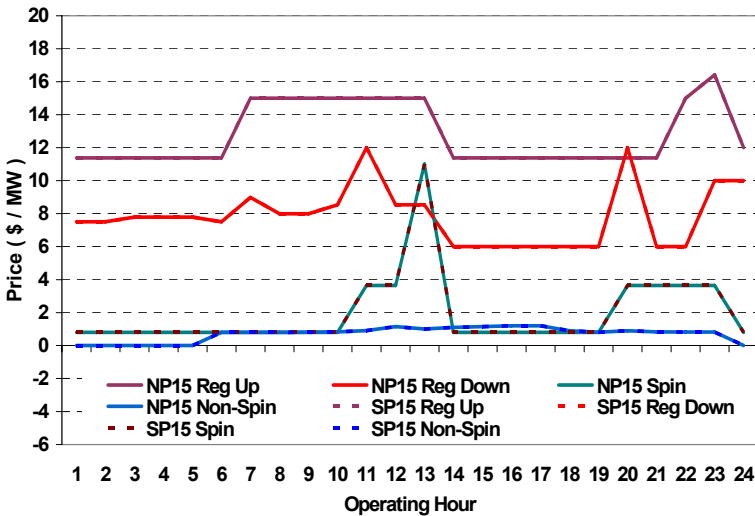


	NP15				SP15			
	Min	Max	Avg	Δ Avg.	Min	Max	Avg	Δ Avg.
<b>RTMA MCP</b>								
<b>Peak</b>	\$ (0.01)	\$155.00	\$ 66.70	\$ 21.83	\$ (0.01)	\$155.00	\$ 66.70	\$ 21.83
<b>Off-Peak</b>	\$ (1.00)	\$291.00	\$ 55.00	\$ (2.89)	\$ (1.00)	\$291.00	\$ 55.00	\$ (2.89)

### Day-Ahead Inter-Zonal Congestion Market: 11-Aug, 2008

Branch Group	Congestion Cost		Total	Total Cost Percent
	Import	Export		
PACI	\$ 75,213	\$ -	\$ 75,213	60%
PALOVRDE	\$ 48,093	\$ -	\$ 48,093	38%
MEAD	\$ 1,722	\$ -	\$ 1,722	1%

### Day Ahead A/S Market Clearing Prices



### Intrazonal Congestion: Out-of-Sequence Redispatch Costs

	Inc MWh	Inc Redispatch Costs	Dec MWh	Dec Redispatch Costs
<b>Peak</b>	748	40,621	-540	14,082
<b>Off-Peak</b>	24	7,550	-796	16,913
<b>Total</b>	772	\$ 48,171	-1,336	\$ 30,995

### Reliability: Must-Offer Unit Commitments

Commitment Type	Avg Hrlly P-Min MW	Daily Min-Load Cost
FERCMOO	0	\$0
RA	272	\$612,988
<b>Totals</b>	272	\$612,988

### Loads:

Peak Load	40,967 MW	Average Load	32424 MW
Time of peak	16:25	Δ Peak from Prev. Day	4,878 MW

Day Ahead (DA) Market Summary: Ancillary Services (A/S) Capacity	Peak				Off-Peak			
	Min	Max	Avg.	Δ Avg.	Min	Max	Avg.	Δ Avg.
Regulation Up Price (\$/MW)	11.38	15.00	13.19	-2.10	11.38	16.41	12.09	0.09
Regulation Down Price (\$/MW)	6.00	12.00	7.66	-0.78	7.50	10.00	8.23	-0.99
Spinning Reserve Price (\$/MW)	0.80	11.00	2.33	-1.77	0.80	3.65	1.16	-0.42
Non-Spinning Reserve Price (\$/MW)	0.80	1.20	0.95	0.44	0.00	0.82	0.20	0.04
Regulation Up Bid Sufficiency Ratio*	153%	318%	263%	20%	207%	263%	251%	-22%
Regulation Down Bid Sufficiency Ratio*	154%	410%	306%	17%	163%	255%	192%	-13%
Spinning Reserve Bid Sufficiency Ratio*	115%	223%	163%	-13%	155%	211%	196%	-11%
Non-Spinning Reserve Bid Sufficiency Ratio*	144%	272%	189%	-35%	203%	263%	243%	-23%
<b>Total Cost of DA A/S (\$)</b>			<b>232,648</b>	<b>-36,113</b>				

\* The Bid Sufficiency Ratio for a given market in a given hour is defined as the sum of capacity offers in MWs divided by the capacity requirement in MWs.