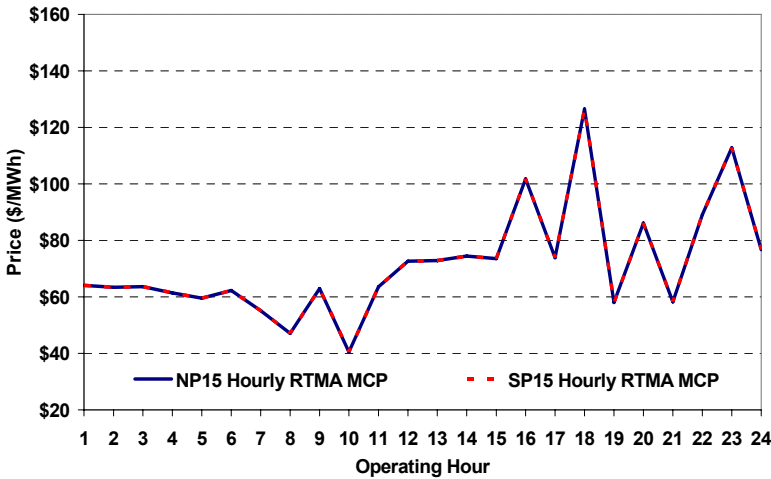
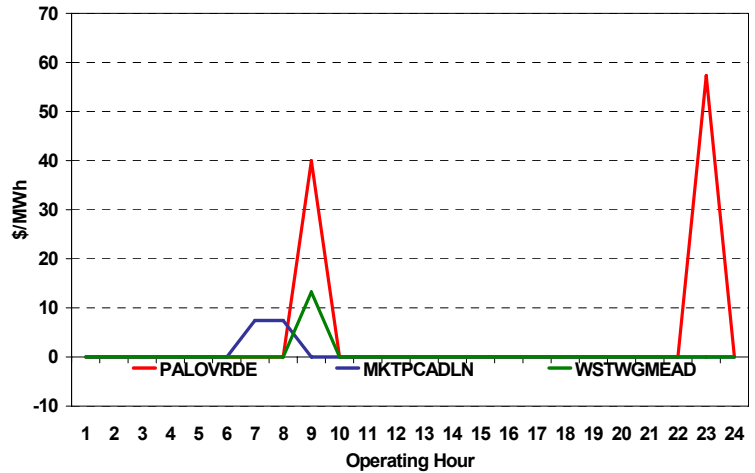


The content of this page is subject to change without notice. Decisions based on information contained herein are the visitor's responsibility.

Real-Time Hourly Average MCP



Selected Day Ahead Branch Group Congestion Prices

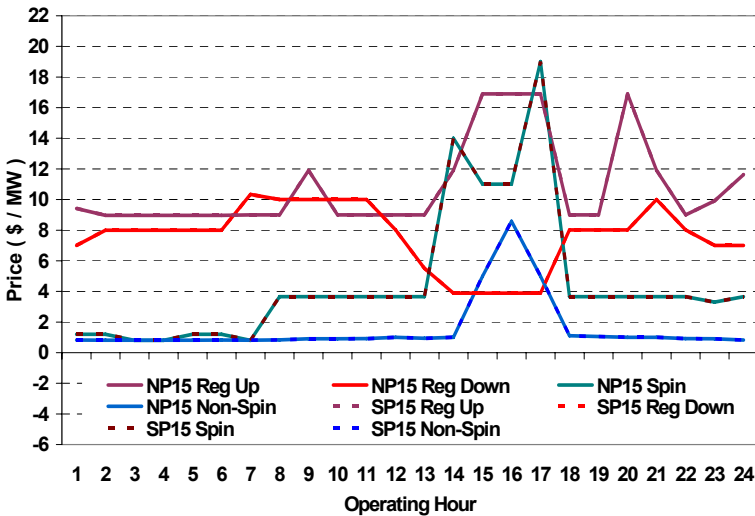


	NP15				SP15			
	Min	Max	Avg	Δ Avg.	Min	Max	Avg	Δ Avg.
RTMA MCP								
Peak	\$ (1.00)	\$ 399.99	\$ 92.52	\$ 21.36	\$ (1.00)	\$ 399.99	\$ 92.52	\$ 21.36
Off-Peak	\$ 30.00	\$ 398.00	\$ 69.08	\$ 13.97	\$ 30.00	\$ 398.00	\$ 69.08	\$ 13.97

Day-Ahead Inter-Zonal Congestion Market: 13-Aug, 2008

Branch Group	Congestion Cost		Total	Total Cost Percent
	Import	Export		
PALOVRDE	\$ 107,325	\$ -	\$ 107,325	93%
MKTPCADLN	\$ 6,303	\$ -	\$ 6,303	5%
WSTWGMEAD	\$ 1,535	\$ -	\$ 1,535	1%

Day Ahead A/S Market Clearing Prices



Intrazonal Congestion: Out-of-Sequence Redispatch Costs

	Inc MWh	Inc Redispatch Costs	Dec MWh	Dec Redispatch Costs
Peak	674	106,741	-731	66,019
Off-Peak	65	18,268	0	0
Total	739	\$ 125,009	-731	\$ 66,019

Reliability: Must-Offer Unit Commitments

Commitment Type	Avg Hrlly P-Min MW	Daily Min-Load Cost
FERCMOO	0	\$0
RA	180	\$316,423
Totals	180	\$316,423

Loads:

Peak Load	42,521 MW	Average Load	33336 MW
Time of peak	16:30	Δ Peak from Prev. Day	1,239 MW

Day Ahead (DA) Market Summary: Ancillary Services (A/S) Capacity	Peak				Off-Peak			
	Min	Max	Avg.	Δ Avg.	Min	Max	Avg.	Δ Avg.
Regulation Up Price (\$/MW)	9.00	16.89	11.52	0.90	8.97	11.63	9.48	-0.27
Regulation Down Price (\$/MW)	3.88	10.33	7.59	0.10	7.00	8.00	7.63	-0.38
Spinning Reserve Price (\$/MW)	0.80	19.01	6.00	-0.81	0.80	3.65	1.67	0.11
Non-Spinning Reserve Price (\$/MW)	0.81	8.58	1.93	0.88	0.81	0.90	0.83	0.02
Regulation Up Bid Sufficiency Ratio*	254%	426%	337%	-164%	342%	422%	390%	-54%
Regulation Down Bid Sufficiency Ratio*	170%	431%	315%	-7%	126%	294%	176%	-28%
Spinning Reserve Bid Sufficiency Ratio*	114%	220%	166%	3%	159%	202%	186%	-8%
Non-Spinning Reserve Bid Sufficiency Ratio*	132%	283%	195%	-5%	198%	260%	241%	-13%
Total Cost of DA A/S (\$)	312,531				10,685			

* The Bid Sufficiency Ratio for a given market in a given hour is defined as the sum of capacity offers in MWs divided by the capacity requirement in MWs.