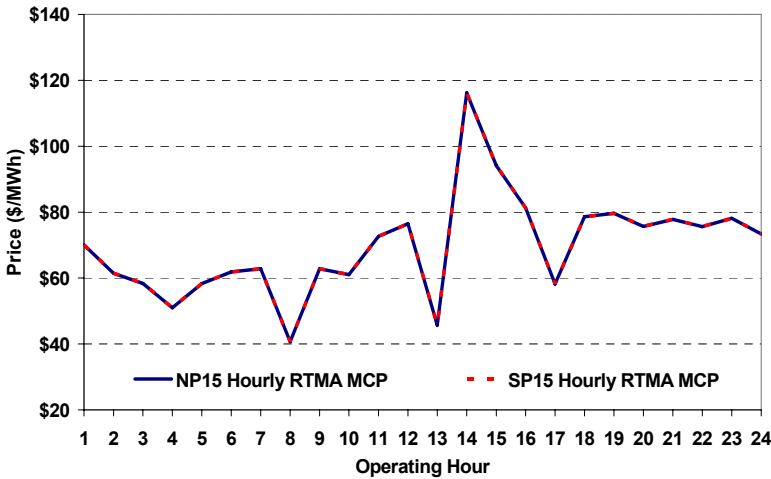
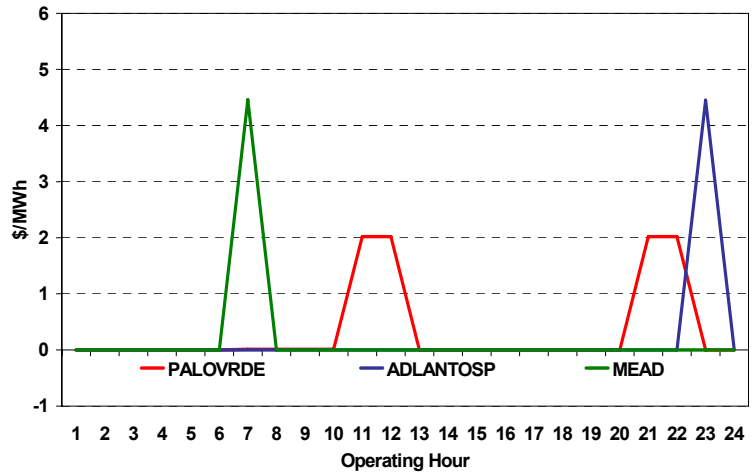


The content of this page is subject to change without notice. Decisions based on information contained herein are the visitor's responsibility.

### Real-Time Hourly Average MCP



### Selected Day Ahead Branch Group Congestion Prices

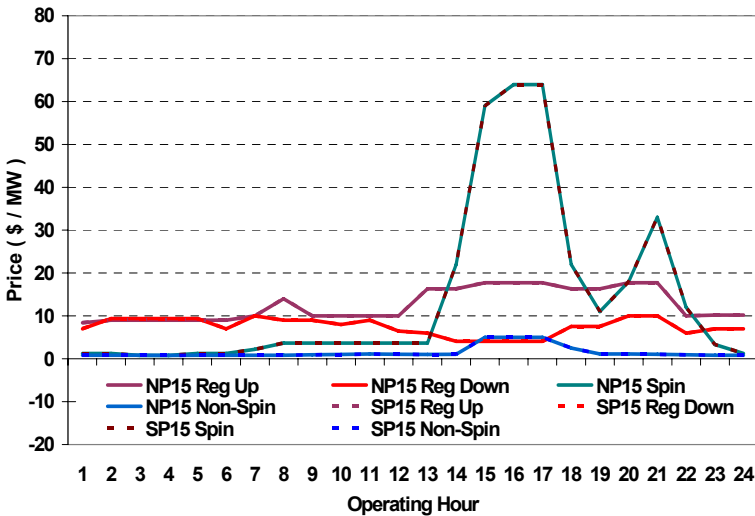


	NP15				SP15			
	Min	Max	Avg	Δ Avg.	Min	Max	Avg	Δ Avg.
<b>RTMA MCP</b>								
<b>Peak</b>	\$ (15.00)	\$ 399.99	\$ 95.23	\$ 2.71	\$ (15.00)	\$ 399.99	\$ 95.23	\$ 2.71
<b>Off-Peak</b>	\$ (0.01)	\$ 89.06	\$ 63.50	\$ (5.58)	\$ (0.01)	\$ 89.06	\$ 63.50	\$ (5.58)

### Day-Ahead Inter-Zonal Congestion Market: 14-Aug, 2008

Branch Group	Congestion Cost		Total	Total Cost Percent
	Import	Export		
PALOVRDE	\$ 20,276	\$ -	\$ 20,276	73%
ADLANTOSP	\$ 4,610	\$ -	\$ 4,610	17%
MEAD	\$ 2,997	\$ -	\$ 2,997	11%

### Day Ahead A/S Market Clearing Prices



### Intrazonal Congestion: Out-of-Sequence Redispatch Costs

	Inc MWh	Inc Redispatch Costs	Dec MWh	Dec Redispatch Costs
<b>Peak</b>	1,217	103,655	-166	10,058
<b>Off-Peak</b>	518	52,355	0	0
<b>Total</b>	1,735	\$ 156,010	-166	\$ 10,058

### Reliability: Must-Offer Unit Commitments

Commitment Type	Avg Hrlly P-Min MW	Daily Min-Load Cost
FERCMOO	0	\$0
RA	172	\$144,809
<b>Totals</b>	172	\$144,809

### Loads:

Peak Load	44,361 MW	Average Load	34773 MW
Time of peak	16:01	Δ Peak from Prev. Day	1,840 MW

Day Ahead (DA) Market Summary: Ancillary Services (A/S) Capacity	Peak				Off-Peak			
	Min	Max	Avg.	Δ Avg.	Min	Max	Avg.	Δ Avg.
Regulation Up Price (\$/MW)	10.00	17.75	14.25	2.74	8.42	10.18	9.20	-0.27
Regulation Down Price (\$/MW)	4.04	10.00	7.16	-0.42	7.00	9.36	8.18	0.56
Spinning Reserve Price (\$/MW)	2.20	63.94	20.56	14.56	0.80	3.30	1.36	-0.31
Non-Spinning Reserve Price (\$/MW)	0.82	5.00	1.84	-0.09	0.80	0.83	0.82	-0.01
Regulation Up Bid Sufficiency Ratio*	255%	584%	378%	41%	400%	539%	437%	47%
Regulation Down Bid Sufficiency Ratio*	206%	532%	343%	27%	137%	333%	196%	21%
Spinning Reserve Bid Sufficiency Ratio*	106%	233%	159%	-7%	173%	215%	200%	14%
Non-Spinning Reserve Bid Sufficiency Ratio*	131%	284%	192%	-3%	212%	262%	246%	5%
<b>Total Cost of DA A/S (\$)</b>			<b>577,146</b>	<b>264,615</b>				

\* The Bid Sufficiency Ratio for a given market in a given hour is defined as the sum of capacity offers in MWs divided by the capacity requirement in MWs.